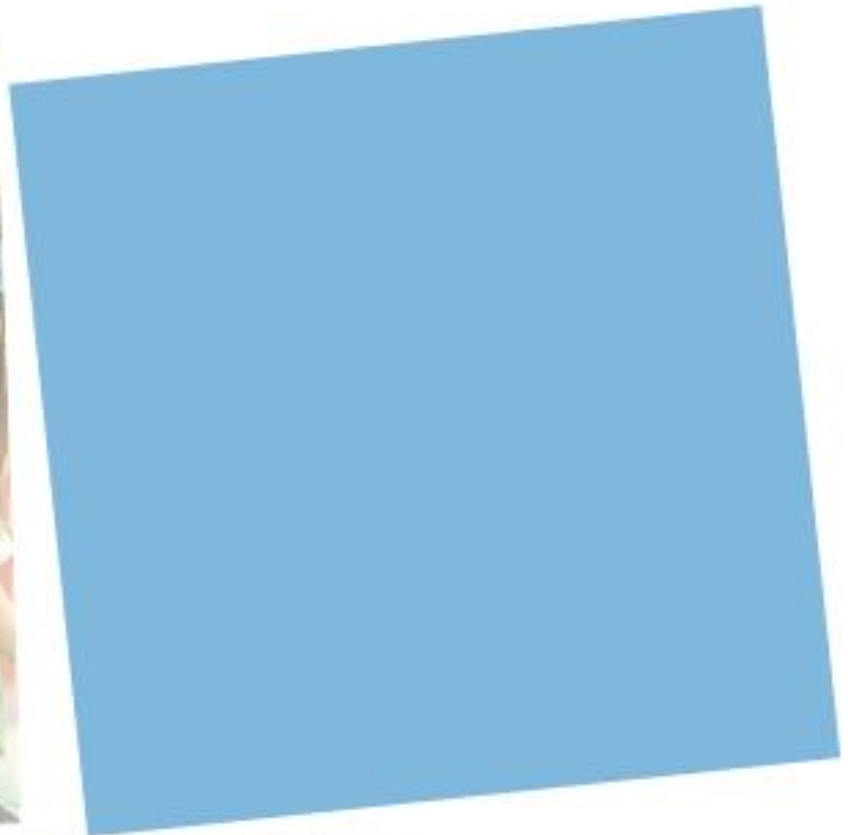


2012 Annual Report to the School Community

Patterson Lakes Primary School
School Number: 5190



Government School Performance Summary 2012

What our school is doing

Patterson Lakes Primary School

Patterson Lakes Primary is a progressive school that is committed to the development of its staff and to the improvement of student learning. The school's values of Integrity, Respect and Excellence form the moral purpose of the school and the foundation for ensuring the best environment for all members of our community.

This school has 49.5 equivalent full time staff - 2 Principal Class, 39.2 teachers and 13.3 Education Support Staff.

The school has a strong culture of expectation, relationship building, curriculum delivery and extra curricular programs. Our programs are designed to cater for the individual needs of students by providing a differentiated curriculum. This includes a variety of enrichment programs, both within and beyond regular classrooms.

A commitment to the development of Information and Communication Technologies and emphasis upon thinking strategies across the curriculum, provide a flexible learning program designed to meet students' individual needs.

There is a strong partnership between parents and staff, with a high level of parent participation on school council and committees, Parents and Friends Association, Classroom Liason Parents, classroom helpers, and in fundraising and social activities.

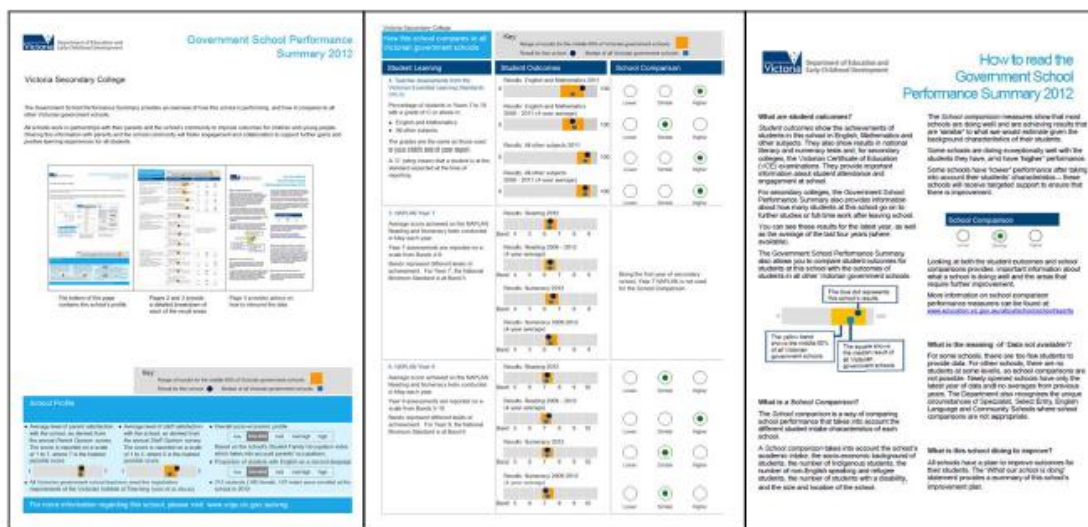
Patterson Lakes Primary School offers its 746 students an attractive, safe and stimulating learning environment.

Student Learning	Student Engagement and Wellbeing	Student Pathways and Transitions
<p>Patterson Lakes is proud of the academic achievements of its students. Year 3 and 5 NAPLAN results indicate students performed well above the state mean, and above students in other primary schools based on intake adjusted performance data in both Literacy and Numeracy.</p> <p>All PSD students showed progress of 6 to 12 months growth and were able to satisfactorily achieve their individual goals. 36% achieved at or above the expected VELs levels in English and Mathematics.</p> <p>A continual focus on developing the capacity of our staff and students has resulted in improved growth across all year levels. In this past two years the school has trialled a range of whole school assessment and diagnostic tools to help identify the stage of learning of each student in order to support their individual learning needs.</p> <p>In 2013 the school will continue to strengthen the focus on a whole school approach to English and Maths, with an emphasis on Reading, Working Mathematically and Structure.</p>	<p>Student attendance was better than the state mean and similar to other schools given our student cohort. The school considers this to be an area for improvement. Our attendance data reveals substantial absence by a small number of students. The school is also focussed on reducing the number of late days at all levels.</p> <p>Our Student Attitudes to School Survey indicates that our Years 5 and 6 students' sense of belonging and connectedness to school is also similar to other schools given student backgrounds</p> <p>Our school offers strong pastoral care, a rich 'student voice' program, and a vibrant House System which provides students with rich learning experiences beyond the classroom.</p> <p>Our code of behaviour and whole school behaviour management strategy has focused on Restorative Practices and encouraging students to have a high level of respect for oneself and others.</p>	<p>Patterson Lakes Primary School has a strong transition program.</p> <p>Our Prep students' transition to school program operates successfully throughout the year.</p> <p>Strong communication links with our feeder preschools have been maintained. The use of teacher aides has assisted in ensuring nearly all students achieved the expected literacy and numeracy outcomes. The Prep Buddy Program similarly contributed to developing their social confidence.</p> <p>Year 6 students have been involved in a range of activities which have assisted with this transition into secondary school. The strong relationships we have established with our secondary feeder schools enable our students to make successful transitions.</p> <p>The school implements a successful 'Up Day' program to allow students to move to their next year's class with their new teacher.</p>
<p>For more detailed information regarding our school please visit our website at</p> <p>http://www.patterson-lakes-ps.vic.edu.au</p>		

Patterson Lakes Primary School

The Government School Performance Summary provides an overview of how this school is performing and how it compares to all other Victorian government schools.

All schools work in partnership with their school community to improve outcomes for children and young people. Sharing this information with parents and the wider school community will foster engagement and collaboration to support further gains and positive learning experiences for all students.



The bottom of this page contains this school's profile.

Pages 2 and 3 provide a detailed breakdown of each of the result areas.

Page 4 provides advice on how to interpret the data.

Key:

Range of results for the middle 60% of Victorian government schools:

Result for this school:

Median of all Victorian government schools:

School Profile

- Average level of parent satisfaction with the school, as derived from the annual *Parent Opinion* survey. The score is reported on a scale of 1 to 7, where 7 is the highest possible score.
1 7
- Average level of staff satisfaction with the school, as derived from the annual *Staff Opinion* survey. The score is reported on a scale of 1 to 5, where 5 is the highest possible score.
1 5
- All Victorian government school teachers meet the registration requirements of the Victorian Institute of Teaching (www.vit.vic.edu.au).
- Overall socio-economic profile
low low-mid **mid** mid-high high
Based on the school's Student Family Occupation index which takes into account parents' occupations.
- Proportion of students with English as a second language
low low-mid mid **mid-high** high
- 701 students (337 female, 364 male) were enrolled at this school in 2012.

For more information regarding this school, please visit www.vrqa.vic.gov.au/sreg

How this school compares to all Victorian government schools

Key:

Range of results for the middle 60% of Victorian government schools:



Result for this school:

Median of all Victorian government schools:



Student Learning	Student Outcomes	School Comparison
<p>1. Teacher assessments from the Victorian Essential Learning Standards (VELS)</p> <p>Percentage of students in Years Prep to 6 with a grade of C or above in:</p> <ul style="list-style-type: none"> English and Mathematics All other subjects <p>The grades are the same as those used in your child's end of year report.</p> <p>A 'C' rating means that a student is at the standard expected at the time of reporting.</p>	<p>Results: English and Mathematics 2011</p> <p>Results: English and Mathematics 2008 - 2011 (4-year average)</p> <p>Results: All other subjects 2011</p> <p>Results: All other subjects 2008 - 2011 (4-year average)</p>	<p>Lower Similar Higher</p> <p>Lower Similar Higher</p> <p>Lower Similar Higher</p> <p>Lower Similar Higher</p>
<p>2. NAPLAN Year 3</p> <p>Average score achieved on the NAPLAN Reading and Numeracy tests conducted in May each year.</p> <p>Year 3 assessments are reported on a scale from Bands 1-6.</p> <p>Bands represent different levels of achievement. For Year 3, the National Minimum Standard is at Band 2.</p>	<p>Results: Reading 2012</p> <p>Results: Reading 2009 - 2012 (4-year average)</p> <p>Results: Numeracy 2012</p> <p>Results: Numeracy 2009-2012 (4-year average)</p>	<p>Lower Similar Higher</p> <p>Lower Similar Higher</p> <p>Lower Similar Higher</p> <p>Lower Similar Higher</p>
<p>3. NAPLAN Year 5</p> <p>Average score achieved on the NAPLAN Reading and Numeracy tests conducted in May each year.</p> <p>Year 5 assessments are reported on a scale from Bands 3-8.</p> <p>Bands represent different levels of achievement. For Year 5, the National Minimum Standard is at Band 4.</p>	<p>Results: Reading 2012</p> <p>Results: Reading 2009 - 2012 (4-year average)</p> <p>Results: Numeracy 2012</p> <p>Results: Numeracy 2009-2012 (4-year average)</p>	<p>Lower Similar Higher</p> <p>Lower Similar Higher</p> <p>Lower Similar Higher</p> <p>Lower Similar Higher</p>

How this school compares to all Victorian government schools

Key:

Range of results for the middle 60% of Victorian government schools:



Result for this school:



Median of all Victorian government schools:



Student Engagement and Wellbeing

4. Student attendance

Average attendance rate of all students in the school. Common reasons for non-attendance include illness and extended family holidays.

Results: 2011



Results: 2008 - 2011 (4-year average)



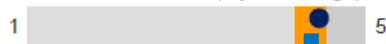
Average 2011 attendance rate by year level:

Prep	Yr1	Yr2	Yr3	Yr4	Yr5	Yr6
93%	94%	93%	94%	94%	93%	93%

Results: 2012



Results: 2009 - 2012 (4-year average)



5. Student attitudes to school

Derived from the *Attitudes to School* survey completed annually by Victorian government school students in Years 5 to 12. It includes questions about students' engagement in and enjoyment of school. The school's average score is reported here on a scale of 1 to 5, where 5 is the highest possible score.

School Comparison



Lower



Similar



Higher



Lower



Similar



Higher

How to read the Government School Performance Summary 2012

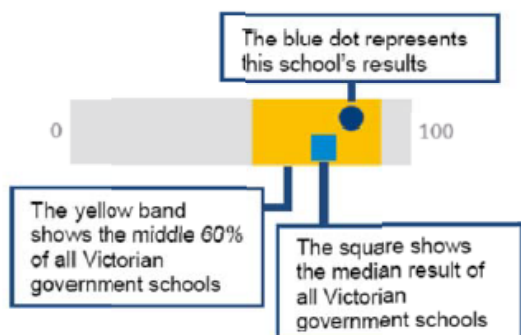
What are student outcomes?

Student outcomes show the achievements of students in this school in English, Mathematics and other subjects. They also show results in national literacy and numeracy tests and, for secondary colleges, the Victorian Certificate of Education (VCE) examinations. They provide important information about student attendance and engagement at school.

For secondary colleges, the Government School Performance Summary also provides information about how many students at this school go on to further studies or full-time work after leaving school.

You can see these results for the latest year, as well as the average of the last four years (where available).

The Government School Performance Summary also allows you to compare student outcomes for students at this school with the outcomes of students in all other Victorian government schools.



What is a School Comparison?

The *School comparison* is a way of comparing school performance that takes into account the different student intake characteristics of each school.

A *School comparison* takes into account the school's academic intake, the socio-economic background of students, the number of Indigenous students, the number of non-English speaking and refugee students, the number of students with a disability, and the size and location of the school.

The *School comparison* measures show that most schools are doing well and are achieving results that are '**similar**' to what we would estimate given the background characteristics of their students.

Some schools are doing exceptionally well with the students they have, and have '**higher**' performance.

Some schools have '**lower**' performance after taking into account their students' characteristics – these schools will receive targeted support to ensure that there is improvement.

School Comparison



Looking at both the student outcomes and school comparisons provides important information about what a school is doing well and the areas that require further improvement.

More information on school comparison performance measures can be found at:
www.education.vic.gov.au/aboutschool/schoolreports

What is the meaning of 'Data not available'?

For some schools, there are too few students to provide data. For other schools, there are no students at some levels, so school comparisons are not possible. Newly opened schools have only the latest year of data and no averages from previous years. The Department also recognises the unique circumstances of Specialist, Select Entry, English Language and Community Schools where school comparisons are not appropriate.

What is this school doing to improve?

All schools have a plan to improve outcomes for their students. The '*What our school is doing*' statement provides a summary of this school's improvement plan.

Financial Performance and Position

Financial Performance – Operating Statement Summary for the year ending 31st December, 2012

Revenue	2012 Actual
Departmental Grants	\$617,150
Commonwealth Government Grants	\$11,736
State Government Grants	\$1,000
Other	\$274,452
Locally Raised Funds	\$764,823
Total Operating Revenue	\$1,669,161

Expenditure

Salaries and Allowances	\$234,427
Bank Charges	\$1,504
Consumables	\$86,306
Books and Publications	\$6,718
Communication Costs	\$11,504
Furniture and Equipment	\$159,912
Utilities	\$41,448
Property Services	\$256,778
Travel and Subsistence	\$174
Motor Vehicle Expenses	\$0
Administration	\$6,784
Health and Personal Development	\$1,776
Professional Development	\$23,209
Entertainment and Hospitality	\$5,849
Trading and Fundraising	\$132,547
Support / Service	\$72,472
Miscellaneous	\$191,464
Total Operating Expenditure	\$1,232,872

Net Operating Surplus/-Deficit **\$436,289**

Capital Expenditure **\$20,467**

Please note that the above amounts do not include any credit revenue or expenditure allocated or spent by the school through its Student Resource Package

Financial Position as at 31st December, 2012

Funds Available	2012 Actual
High Yield Investment Account	\$164,101
Official Account	\$44,106
Other Bank Accounts (listed individually)	
Building Fund	\$0
Library Fund	\$0
PLPS Investment account	\$430,000
(insert)	\$
(insert)	\$
(insert)	\$
Total Funds Available	\$638,207

Financial Commitments

Financial Commitments	2012 Actual
School Operating Reserve	\$182,498
Assets or Equipment Replacement <12 months	\$0
Capital – Building/Grounds including SMS <12 months	\$0
Maintenance – Building/Grounds including SMS <12 months	\$0
Beneficiary / Memorial Accounts	\$0
Co-operative Bank Account	\$0
Revenue Receipted in Advance	\$
School based programs	\$956
Region / Network / Cluster Funds	\$163,768
Provision Accounts	\$
Repayable to DEECD	\$
Other Recurrent Expenditure (Accounts Payable)	\$57,039
Assets or Equipment Replacement >12 months	\$
Capital - Building / Grounds including SMS >12 months	\$
Maintenance - Building / Grounds including SMS >12 months	\$233,947
Total Financial Commitments	\$638,207

Financial performance and position commentary